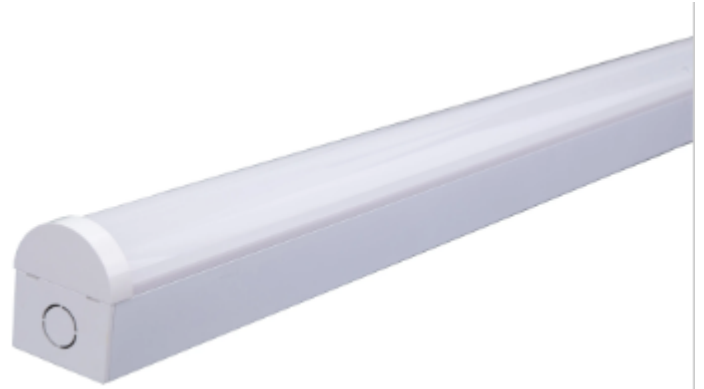


## LED Batten



DATA SHEET

### Product information

The LED IP65 Batten designed to be a direct replacement for conventional battens, with energy savings. The best choice for smooth linear lighting. The range available in 20W & 40W with size of 600mm and 1200mm. Featuring high grade polycarbonate diffuser and housing, they are suitable for commercial and industrial use where moisture or dust is prevalent. The Weatherproof Batten range offers cost effective reliability and weatherproof resistance.

### Features

- Ambient temperature: -20°C to +45°C
- Tri Colour 3000/4000/5000K Switchable
- High color rendering: CRI>80
- High efficiency: up to 100lm/w
- Environmental: save up to 60% energy
- Beam angle: 110°
- Easy to install

### Benefits

- Easy to install , requires small space due to compact size
- Seamless linear lighting without dark spots
- Healthy – UV-free & IR-free

### Application areas



Office



Retail



Hospitality



Industrial



Corridors / Entrances / Basements  
Bathrooms / Stairwells

Direct replacement for luminaires with fluorescent lamps.

### Specification

Product Code	Description	Wattage (W)	Lumen output (lm)	Efficacy (lm/W)	Voltage (V)	Input current (mA)	Control	CCT (K)	CRI	Beam angle (°)	Energy Class	Power Factor
Discontinued	LED Batten 20W 3000/4000/5000K IP20	20	1650	83	100-240	100	Static	3000	> 80	110	A+	0.95
B0504-01006-AU	LED Batten 40W 3000/4000/5000K IP20	40	3200	80	100-240	100	Static	4000	> 80	110	A+	0.95

